

Coaxial Frequency Mixer

ZFM-2H+

Level 17 (LO Power +17 dBm) 5 to 1000 MHz

Maximum Ratings

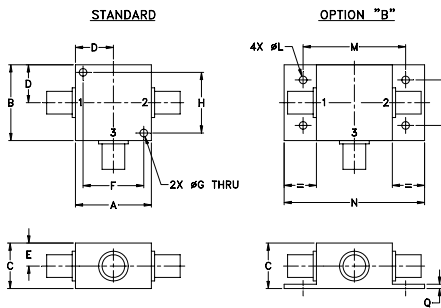
Operating Temperature	-55°C to 100°C
Storage Temperature	-55°C to 100°C
RF Power	200mW
IF Current	40mA

Permanent damage may occur if any of these limits are exceeded.

Coaxial Connections

LO	1
RF	2
IF	3

Outline Drawing



Outline Dimensions (inch/mm)

A	B	C	D	E	F	G	H	J	K	L	M	N	P	Q	wt
1.25	1.25	.75	.63	.38	1.00	.125	1.000	--	--	.125	1.688	2.18	.75	.07	grams
31.75	31.75	19.05	16.00	9.65	25.40	3.18	25.40	--	--	3.18	42.88	55.37	19.05	1.78	70.0

Features

- low conversion loss, 6.12 dB typ.
- good L-R isolation, 40 dB typ, L-I, 35 dB typ.
- rugged shielded case

Applications

- VHF/UHF
- cellular
- instrumentation



SMA version shown
CASE STYLE: K18

Connectors	Model
BNC	ZFM-2H+
SMA	ZFM-2H-S+
BRACKET	(OPTION "B")

+RoHS Compliant

The +Suffix identifies RoHS Compliance. See our web site for RoHS Compliance methodologies and qualifications

Electrical Specifications

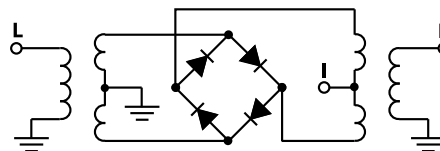
FREQUENCY (MHz)	CONVERSION LOSS (dB)	LO-RF ISOLATION (dB)			LO-IF ISOLATION (dB)					
		L	M	U	L	M	U			
5-1000	6.12	50	40	30	45	40	35	25	25	17

1 dB COMP.: +14 dBm typ. L = low range [f_L to $10 f_L$] M = mid range [$10 f_L$ to $f_U/2$] U = upper range [$f_U/2$ to f_U]
 \bar{X} = Mid-Band m Total Range Max. σ Max.

Typical Performance Data

Frequency (MHz)	Conversion Loss (dB)	Isolation L-R (dB)	Isolation L-I (dB)	VSWR RF Port (:1)	VSWR LO Port (:1)
5.00	35.00	5.75	73.03	64.57	1.24
35.15	65.15	5.75	53.95	50.91	1.10
65.30	95.30	5.78	47.75	44.94	1.10
125.61	95.61	5.83	45.94	42.85	1.09
185.91	155.91	5.88	41.73	38.74	1.09
216.06	186.06	5.87	40.07	37.26	1.10
276.37	246.37	5.70	37.49	34.59	1.11
336.67	306.67	5.62	35.70	32.97	1.11
396.98	366.98	5.78	35.50	32.29	1.12
457.28	427.28	6.15	33.92	30.55	1.13
517.58	487.58	5.88	34.70	29.07	1.15
547.74	517.74	5.91	35.38	29.45	1.15
608.04	578.04	6.36	34.75	28.29	1.16
668.34	638.34	6.50	34.53	27.06	1.17
728.65	698.65	6.30	33.69	25.41	1.20
788.95	758.95	6.43	32.39	25.21	1.22
849.26	819.26	7.56	32.23	24.28	1.26
909.56	879.56	8.59	32.46	23.91	1.34
969.86	939.86	8.55	32.66	24.30	1.46
1000.00	970.00	8.57	32.20	24.05	1.62

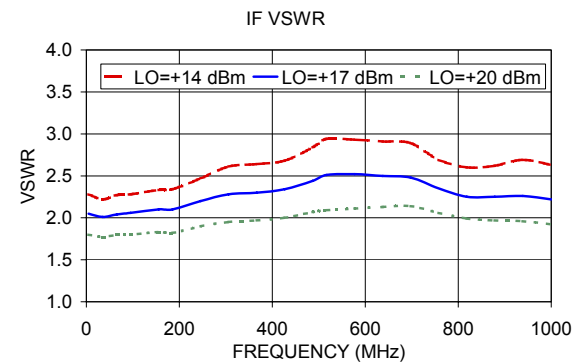
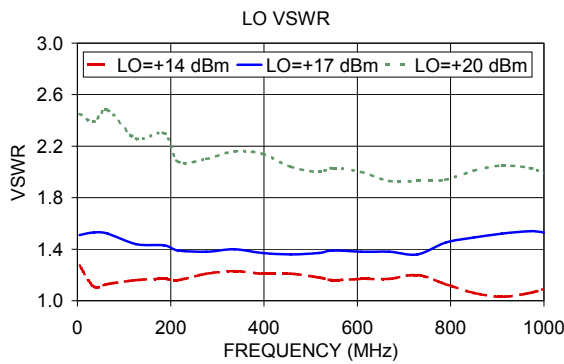
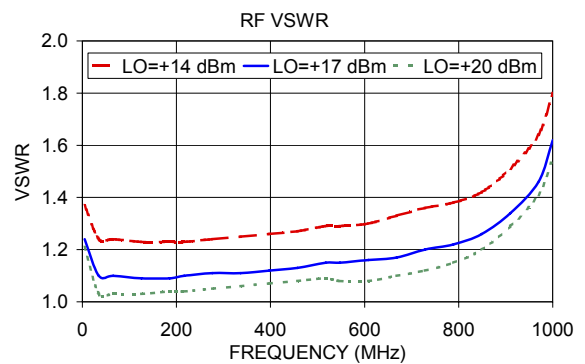
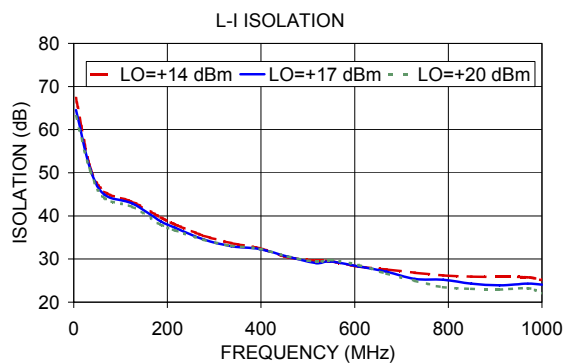
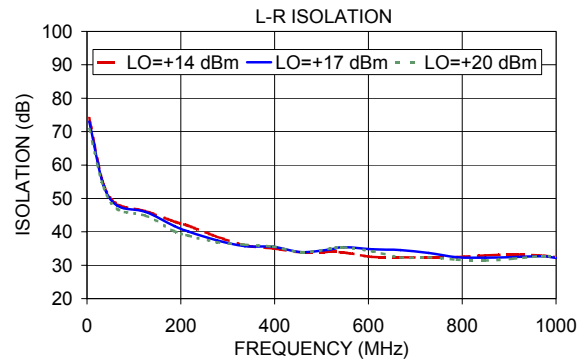
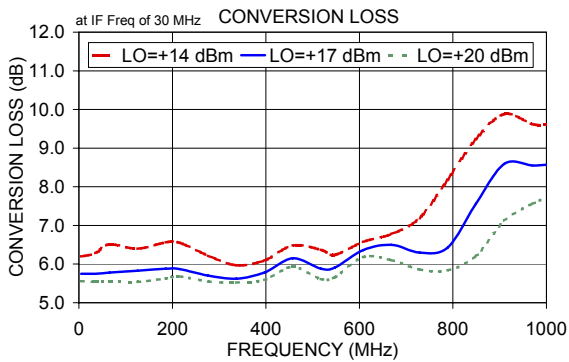
Electrical Schematic



Notes

- Performance and quality attributes and conditions not expressly stated in this specification document are intended to be excluded and do not form a part of this specification document.
- Electrical specifications and performance data contained in this specification document are based on Mini-Circuit's applicable established test performance criteria and measurement instructions.
- The parts covered by this specification document are subject to Mini-Circuits standard limited warranty and terms and conditions (collectively, "Standard Terms"); Purchasers of this part are entitled to the rights and benefits contained therein. For a full statement of the Standard Terms and the exclusive rights and remedies thereunder, please visit Mini-Circuits' website at www.minicircuits.com/MCLStore/terms.jsp





Notes

- A. Performance and quality attributes and conditions not expressly stated in this specification document are intended to be excluded and do not form a part of this specification document.
- B. Electrical specifications and performance data contained in this specification document are based on Mini-Circuit's applicable established test performance criteria and measurement instructions.
- C. The parts covered by this specification document are subject to Mini-Circuits standard limited warranty and terms and conditions (collectively, "Standard Terms"); Purchasers of this part are entitled to the rights and benefits contained therein. For a full statement of the Standard Terms and the exclusive rights and remedies thereunder, please visit Mini-Circuits' website at www.minicircuits.com/MCLStore/terms.jsp

